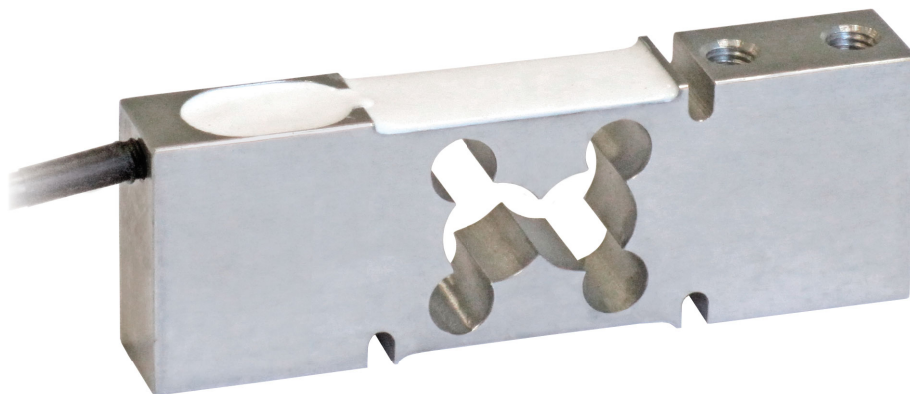




Manufactured according to OIML R60 standards

Capacity from 30 kg to 150 kg



- AISI 420 STAINLESS STEEL
- COMBINED ERROR  $\leq \pm 0.02\%$
- IP67 PROTECTION RATING

CAPACITY	kg	PLATFORM (mm)	NET WEIGHT (kg)
	30	400 x 400	0.75
	50	400 x 400	0.75
	75	400 x 400	0.75
	100	400 x 400	0.75
	150	400 x 400	0.75

### CERTIFICATIONS



Complies with the Eurasian Customs Union regulations



Equivalent of the CE marking for the United Kingdom

#### CERTIFICATIONS ON REQUEST



Linearity test



ATEX II 1GD (zone 0-1-2-20-21-22) (CE - UKCA)



IECEx (zone 0-1-2-20-21-22)

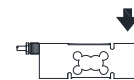
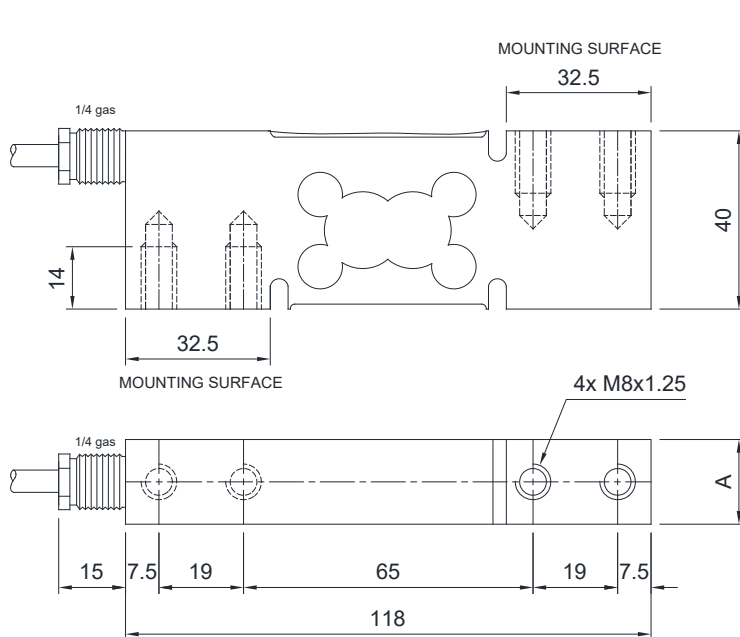


Complies with the Eurasian Customs Union regulations for use in potentially explosive atmospheres



Complies with Chinese market regulations for use in potentially explosive atmospheres

### DIMENSIONS (mm)



kg	30=100	150
A	19	25

For the load cell fixing screws, provide the tightening torque indicated in the table

Screw	M8	
Screw class	6.8	8.8
Tightening torque	19 Nm	25 Nm

### TECHNICAL FEATURES

Material	AISI 420 stainless steel		
Nominal load (E max)	30 - 50 - 75 - 100 - 150 kg		
Combined error	≤ ±0.02%		
Protection rating	IP67		
Rated output	2 mV/V ±10%	Input resistance	385 Ω ±30
Temperature effect on zero	0.002% °C	Output resistance	350 Ω ±5
Temperature effect on span	0.002% °C	Zero balance	±1%
Compensated temperature range	-10 °C / +40 °C	Insulation resistance	>5000 MΩ
Operating temperature range	-20 °C / +60 °C	Safe overload (% of full scale)	150%
Creep at nominal load in 30 minutes	0.02%	Ultimate overload (% of full scale)	300%
Max supply voltage without damage	15 V	Deflection at nominal load	0.3 mm

### ELECTRICAL CONNECTIONS

Cable length	3 m
Cable diameter	4 mm
Cores	6 x 0.20 mm <sup>2</sup>

